



# Cycle through Paradise

Cycle through the mystical paths of a beautiful isle gliding through its many natural and manmade wonders

Cycle through the mystical paths of a beautiful isle gliding through its many natural and man made wonders. As you land in Sri Lanka be greeted in traditional style and be led to your first hideaway to retreat. Explore the diverse beauty of Sri Lanka as you cycle through to engage in the simplicity of village life, Pride of historical highlights, moments in the wilderness and exploring the richness of the cultural heritage. Covering most of its beauty on a cycle the highlight of this holiday plan will be the authentic discovery of Sri Lanka. Mingle with our signature personalities as they bring to life the stories of the past. Sleep in at the most exclusive hideaways handpicked to suit your escapade as you grace this majestic land.



DAY 01

## ARRIVAL

Upon landing to Sri Lanka you will be met by our airport officials and guided via the VIP silk route to fast track your immigration process. Be led directly to the Silk route airport lounge and indulge in a welcome snack while the airport officials will gather your luggage right to you.

You will be met and welcomed by your travel host and be given a brief of your programme until you are ready to leave towards your first hideaway in Ceylon.

Your Travel guide will drive you straight to your first hideaway - Notary's House where you will be spending your first night.



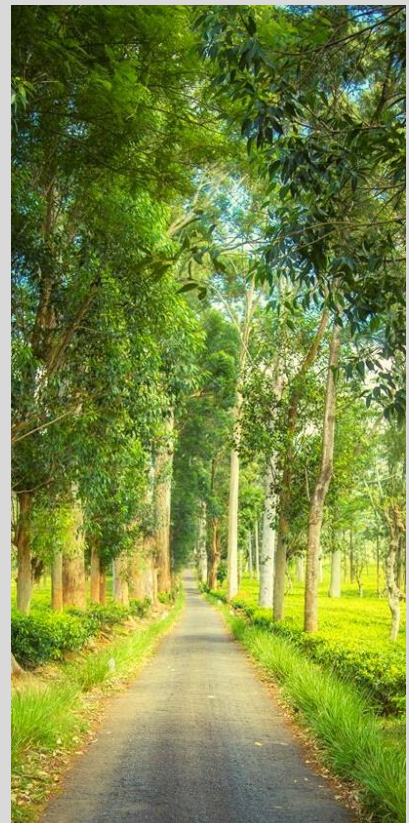
Hideaway: *Notary's House*  
Chamber: *Deluxe Room*  
Meal Type: *HalfBoard*

GET TO KNOW NOTARY'S HOUSE A LITTLE BIT..

The Notary's House is a unique luxury six bedroom boutique hotel set amidst large gardens and a coconut grove, conveniently located just 45 minutes' drive from the Colombo international airport and 30 minutes from the coastal city of Negombo.

Traditional and contemporary Sri Lankan architectural and design elements compliment the property's heritage. The Notary's House offers spacious air-conditioned rooms, a swimming pool and hearty food in a relaxing lakeside setting.

Placement: *Airport to Notary's House*  
Distance: *30 km*  
Time: *45 Mins*



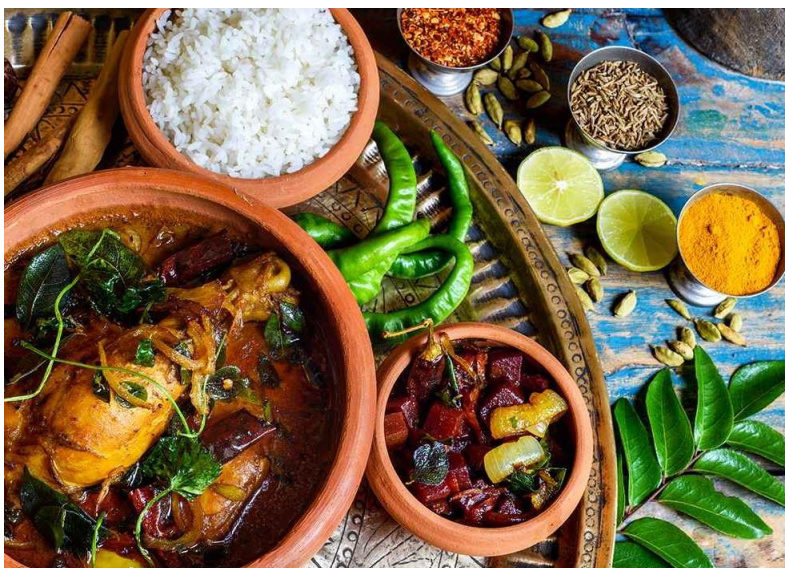
## TREASURES OF HERITAGE

You will set out to commence your Sri Lanka adventure by visiting the countryside in Makandura. After breakfast, cycle through the village allowing the gushing of wind to pass through your skin and to enjoy the breath of fresh air. Don't miss the chance to identify the different nodes of fragrance of the village.

The forest and village surrounding The Notary's House offers charming cycle routes. Ride past scenic paddy fields with resident buffalo and egrets and surrounded by rural households and their seasonal crops. You will be greeted with the warm smiles of the locals as you ride along and quite possibly have the occasional curious house dog tagging along for a while.

The dense foliage of the neighboring Dikkale forest reserve, a local biodiversity hotspot with a wide range of flora and fauna, offers some very pleasant trails.

Enjoy lunch at a local residence where you will be greeted with smiles to a mouth-watering delicious home cooked meal. After lunch head back to your hideaway to relax and enjoy the beauty of the surrounding at Notary's House.



Hideaway: *Notary's House*  
Chamber: *Deluxe Room*  
Meal Type: *Half Board*

### GET TO KNOW MAKANDURA A LITTLE BIT..

Makandura, a serene village closer to the international airport provides the perfect village atmosphere to begin exploring the hidden gems of Sri Lanka.

Being a hidden gem in its self, Makandura offers an authentic, simple serene start to your journey within the tear drop shaped isle of Sri Lanka.

Once a Notary's house, you will live like a noble at his humble abode while you gaze in to the picture perfect village lifestyle of Sri Lanka



## DAY 03

# CAPITALS EXPLORED

After breakfast you will cycle along the main roads to reach Dambadeniya Citadel, a former ancient capital of Sri Lanka. Enjoy a busy cycling route as you share your space with the daily lifestyle of the locals. Take in the best of Sri Lanka as you pass through the busy main roads as well as the occasional villagers with their smiling greetings. After reaching Dambadeniya, explore its ruins which served as Sri Lanka's 3rd capital after Anuradhapura and Polonnaruwa. Much of this hidden gem still lies buried on top of a large rock fortress. A short hike to the summit offers excellent panoramic views of the surrounding countryside.

Enjoy a picnic lunch at Dambadeniya as you take in the beauty of nature and history before being transferred to your next destination in the west coast.

## GET TO KNOW DAMBADENIYA A BIT...

Though excavations have not been extensive at Dambadeniya, the visitors can see remains of the palace, the temple of the tooth and six ponds (perhaps bathing pools), and climb the the rock to get excellent views. The Vijayasundaramaya, a restored 18th century temple a little walk from the main palace complex, contains Buddha images and wall paintings.

Placement: *Makandura to Dambadeniya*  
Distance: *20 km*  
Time: *45 mins*



Hideaway: *Bar Reef*  
Chamber: *Beach Cabana*  
Meal Type: *Full Board*



## DAY 04

# AGRO CEYLON

After breakfast you will begin to explore the rugged nature of Kalpitiya in a cycling ride which will take you through few amazing landscapes and right through the village. The Kalpitiya peninsula is largely a fishing and farming community.

Cycle through the gravel road to pass the shaded pine forests. Once you reach the heart of the village you will cycle through the many agro based cultivation plots of land owned by the locals. Stop at one of the farms to partake in the art of creating a form of livelihood. After a fruitful session in the fields getting your hands dirty move back on to your two wheels and cycle across the rest of the village enjoying its scenic beauty and local refreshments before you head back to your hideaway for relaxation.

Enjoy the sounds of lapping waves as you embrace the night's sky for a private BBQ before turning in for the day.



Hideaway: *Bar Reef*  
Chamber: *Beach Cabana*  
Meal Type: *Full Board*

## GET TO KNOW KALPITIYA A LITTLE BIT..

The relatively undiscovered Kalpitiya peninsular and lagoon is located in North Western coast of Sri Lanka. 120 kilometers north of the capital Colombo, Kalpitiya is one of the most beautiful and untouched coastal stretches in the Pearl of the Indian Ocean. It is known for its serene beauty and the archipelago consists of 14 islands. This verdant, narrow strip of land is separated from the main island by the Puttalam Lagoon on one side and the Indian Ocean on the other, housing natural habitats of diverse fauna and flora.



DAY 05

## FISHING EXPEDITION

Today after breakfast, you will set out on two wheels to explore a different side of the Kalpitiya peninsula. The fishing livelihood too is one of the main forms of income to this part of the Island. You will cycle through the town to reach a fisherman's house and be greeted by him to take you through the stories of the life of a fisherman. Learn about the varying arts of fishing and the difficulties and amusements of the locals. Hop on a boat to go through a lagoon to visit a different Island in which where a smaller community lives. The daily trading, schooling and other commercial business is carrying out by visiting the mainland via boat and their communal events and activities takes place in their private Island. Enjoy a delicious cuisine for lunch in the company of these locals. You will also enjoy the art of fishing like a local.

After an exhilarating experience at the fishing village you will cycle back to your hideaway to enjoy a sundown cocktail show overlooking the ocean amidst a pine forest to blend in with nature.



Hideaway: *Bar Reef*  
Chamber: *Beach Cabana*  
Meal Type: *Half Board*

GET TO KNOW KALPITIYA A LITTLE BIT..

The relatively undiscovered Kalpitiya peninsula and lagoon is located in North Western coast of Sri Lanka. 120 kilometers north of the capital Colombo, Kalpitiya is one of the most beautiful and untouched coastal stretches in the Pearl of the Indian Ocean. It is known for its serene beauty and the archipelago consists of 14 islands. This verdant, narrow strip of land is separated from the main island by the Puttalam Lagoon on one side and the Indian Ocean on the other, housing natural habitats of diverse fauna and flora.



## DAY 06

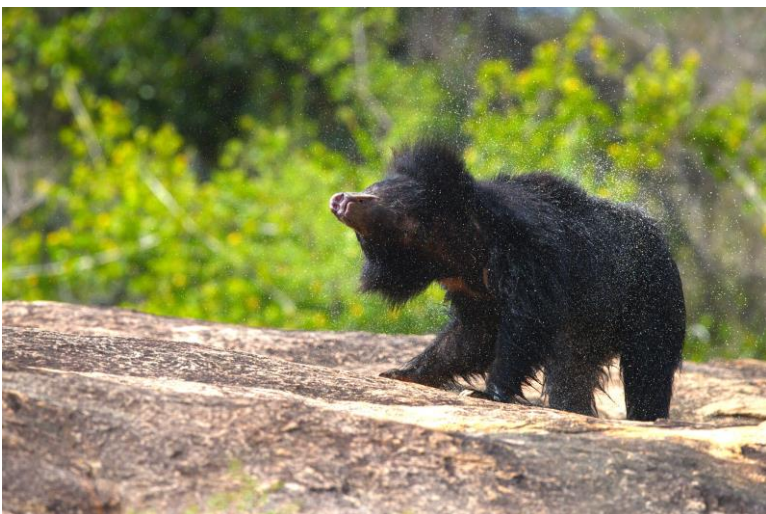
# MOMENTS IN THE WILDERNESS

Make an early start to the day as you enter the Wilpattu national park via a boat tour. Sway through the waters of the west to reach the park entrance and hop on board a private safari jeep to enter the wilderness.

Take in the beauty of the national park which is a key highlight in addition to the wildlife which calls it their home. Grace through the canopy haven providing the much needed shade where the sun shine peaks every now and then to welcome you.

Wilpattu National Park is home for many villus, or natural lakes which dot the landscape in the park. Except for two, these lakes contain rainwater, thus are important for resident and migratory water-birds. The history of the park is also of interest with ancient ruins having been discovered in Wilpattu National Park. Queen named "Kuweni" (considered to be the mother of the Sinhala race) is said to have lived in the place known as Kalli Villu.

After a joyful ride in the wilderness, you will head out in 4 wheel drive to reach your next destination in Mannar Islands.

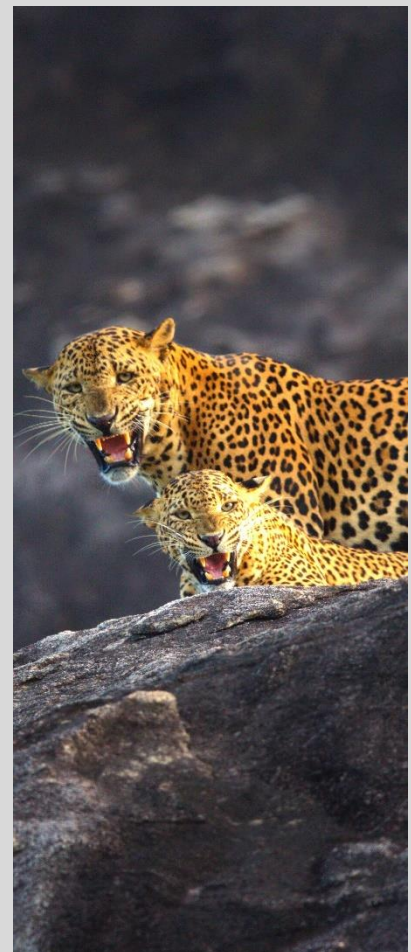


Hideaway: *Palmyrah House*  
Chamber: *Deluxe Room*  
Meal Type: *Full Board*

## GET TO KNOW THE WILPATTU NATIONAL PARK A LITTLE BIT..

Wilpattu is Sri Lanka's largest national park with an area of 130,000 hectares. It is also the oldest national park which has been reopened after several years of closure due to the armed conflict in the country. A unique feature of Wilpattu National Park is that the entire park is dotted with large sand rimmed natural lakes known as "Villus". The Villus collects rain water and tends to attract wildlife especially during the times of drought.

Placement: *Wilpattu National Park to Mannar*





DAY 07

## ISLAND HOPPING

You will set off to an early start in the Island of Mannar to cycle straight up to the start of Adams bridge. After a peaceful cycle ride you will walk over to the first island of the Adams bridge to enjoy a picnic breakfast. Let the white sandy beach sink you in with its wonders. Enjoy the most scenic breakfast.

After a hearty breakfast you will set out to explore the island of Mannar. Cycle through the great historical tales of this part of the island as you are greeted by the road side donkey's who are also considered the residents of the area. Afterwards, you will visit a Donkey rehabilitation center to learn of its work and to meet the mad with a big heart. Enjoy a moment with the Doneky's before you are treated to a cup of ginger tea before heading back to your hideaway to rest and relax in the midst of nature.

Note : Special approval need to be obtained to reach Adams bridge



Hideaway: *Palmyrah House*  
Chamber: *Deluxe Room*  
Meal Type: *Full Board*

GET TO KNOW MANNAR A LITTLE BIT..

A sun - kissed city with white sandy beaches, palm trees, gulls and terns, wild donkeys and fishing boats. Located in the dry zone, Mannar's sea, boasts abundant marine life whilst on land and the district neighbours a vibrant national park. Mannar was a center of maritime trade since ancient times and is influenced by over four centuries of colonialism.



DAY 08

## RICHNESS OF NORTH

After breakfast you will set out to reach your next destination in the north - Jaffna. You will cycle through the rugged roads passing through the causeway overlooking the marshy land and the city buried with water peaking every now and then. After a 30km cycle ride through the most untouched, scenic route in the north of Sri Lanka. Afterwards you will be driven to Jaffna where you will check in to your hideaway.

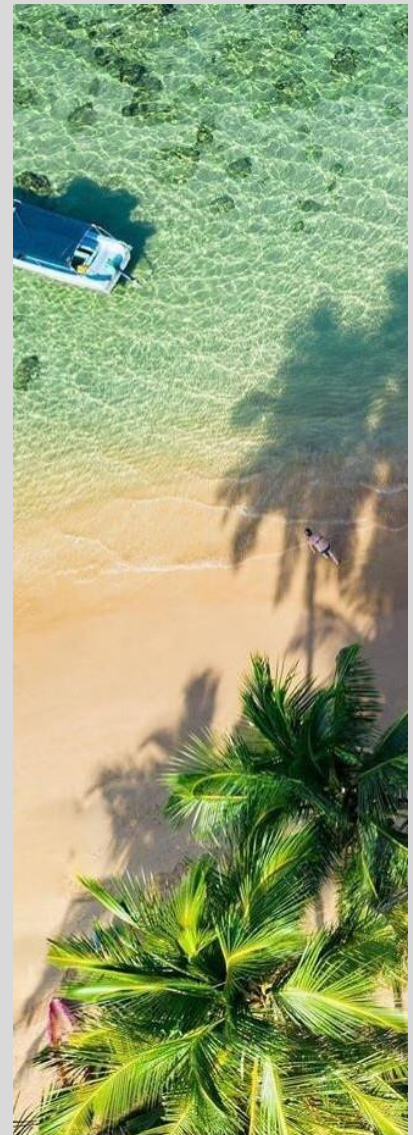
You will be greeted in Jaffna style and you will enjoy a delicious north cuisine for dinner. Burst of flavor and spice - all yours to indulge in.



Hideaway: *Fox Resort*  
Chamber: *Deluxe Room*  
Meal Type: *Full Board*

GET TO KNOW JAFFNA A LITTLE BIT..

Jaffna is the capital city of the Northern Province of Sri Lanka. It is the administrative headquarters of the Jaffna District located on a peninsula of the same name. With a population of 88,138 in 2012, Jaffna is Sri Lanka's 12th most populous city. Jaffna is approximately six miles from Kandarodai which served as an emporium in the Jaffna peninsula from classical antiquity. Jaffna's suburb Nallur, served as the capital of the four-century-long medieval Jaffna Kingdom.



DAY 9

## HISTORICAL PARADE

Wake up in the north, and after breakfast set out to explore the city which has so much history to boast. Learn about the remarkable journey it has gone through. Whilst you cycle through the town, pay attention to the cast differences and how they matter to date. With much historical value to appreciate and difference in culture and environment sink in to enjoy the beauty of the Island.

Visit an organic farm to indulge in a mouth watering cuisine whilst you partake in its process. Be guided through the process of mixing the local spices to blend a burst of flavour.

Return to your hideaway to absorb the day's events as your moments in the north comes to an end today.



Hideaway: *Fox Resort*  
Chamber: *Deluxe Room*  
Meal Type: *Full Board*

GET TO KNOW JAFFNA A  
LITTLE BIT..

Jaffna is the capital city of the Northern Province of Sri Lanka. It is the administrative headquarters of the Jaffna District located on a peninsula of the same name. With a population of 88,138 in 2012, Jaffna is Sri Lanka's 12th most populous city. Jaffna is approximately six miles from Kandarodai which served as an emporium in the Jaffna peninsula from classical antiquity. Jaffna's suburb Nallur, served as the capital of the four-century-long medieval Jaffna Kingdom.



DAY 10

## COMMERCIAL HUB

Bidding farewell to Jaffna you will hop on board a domestic flight to reach the commercial hub of Sri Lanka.

Upon reaching Colombo you will directly be driven to your hideaway – The Residence. You will set out to enjoy a night stroll cycling around Colombo to gain an understanding of the historical importance and the highlights of the commercial city. Political influences, religious monuments, daily trading, bustling busy streets to many more adventures await your cycling adventure. You will pass through many action-filled stations to complete your cycling adventure in Sri Lanka. After a cycling tour of Colombo you will then group up at a lively watering hole

A farewell dinner to embrace your final night in Sri Lanka



Hideaway: *The Residence*  
Chamber: *Park Suite*  
Meal Type: *Bed and Breakfast*

GET TO KNOW COLOMBO A LITTLE BIT..

This commercial hub is a mix of east, west, past and present drawing together all the cultures, religions and influences of colonialism into a perfect blend of sounds, smells and a kaleidoscope of colour. No longer just a sprawling city, you have to endure its beaches, a worthy destination on its own right, which makes an excellent start or finish to your Sri Lankan holiday.

Placement: *Jaffna to Colombo*  
Distance: *394 km*  
Time: *1 hour (Flying)*

